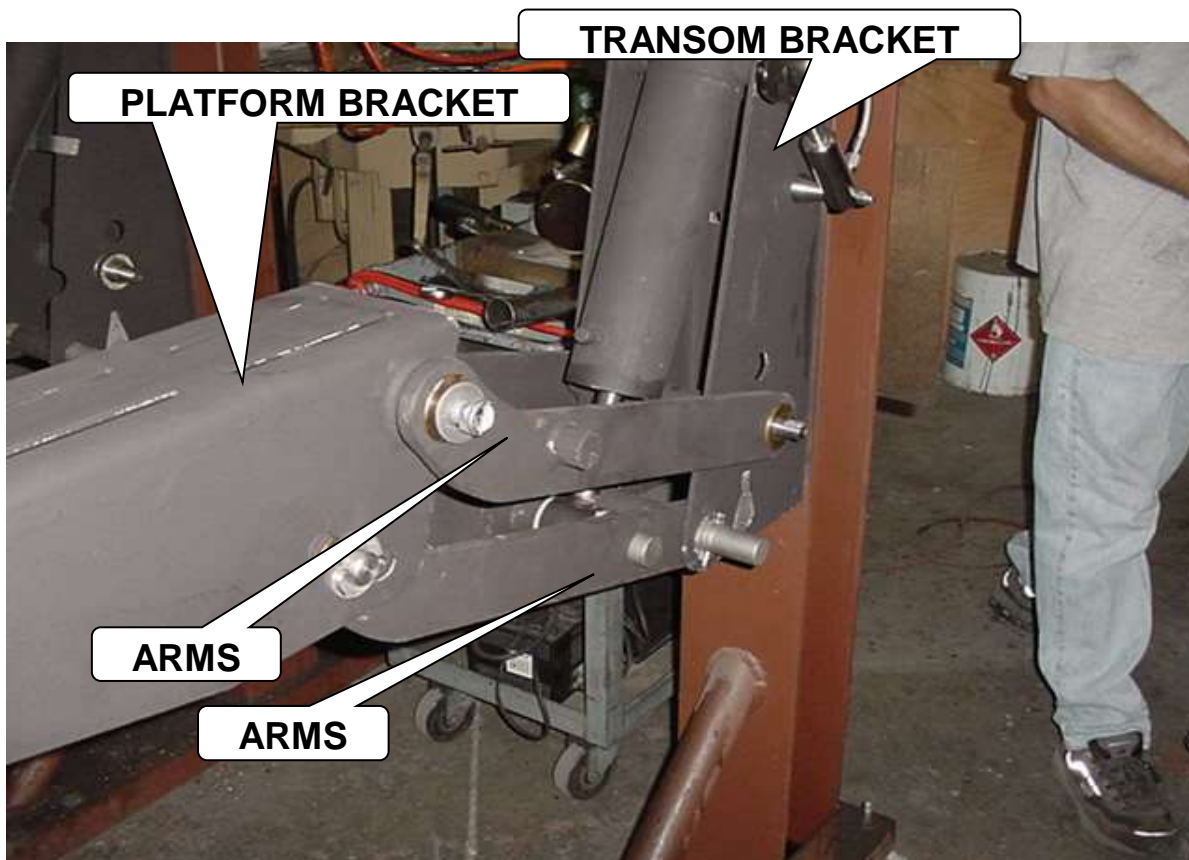


REBUILDING THE SWIM PLATFORM HYDRAULIC LIFT PLATFORM BRACKET

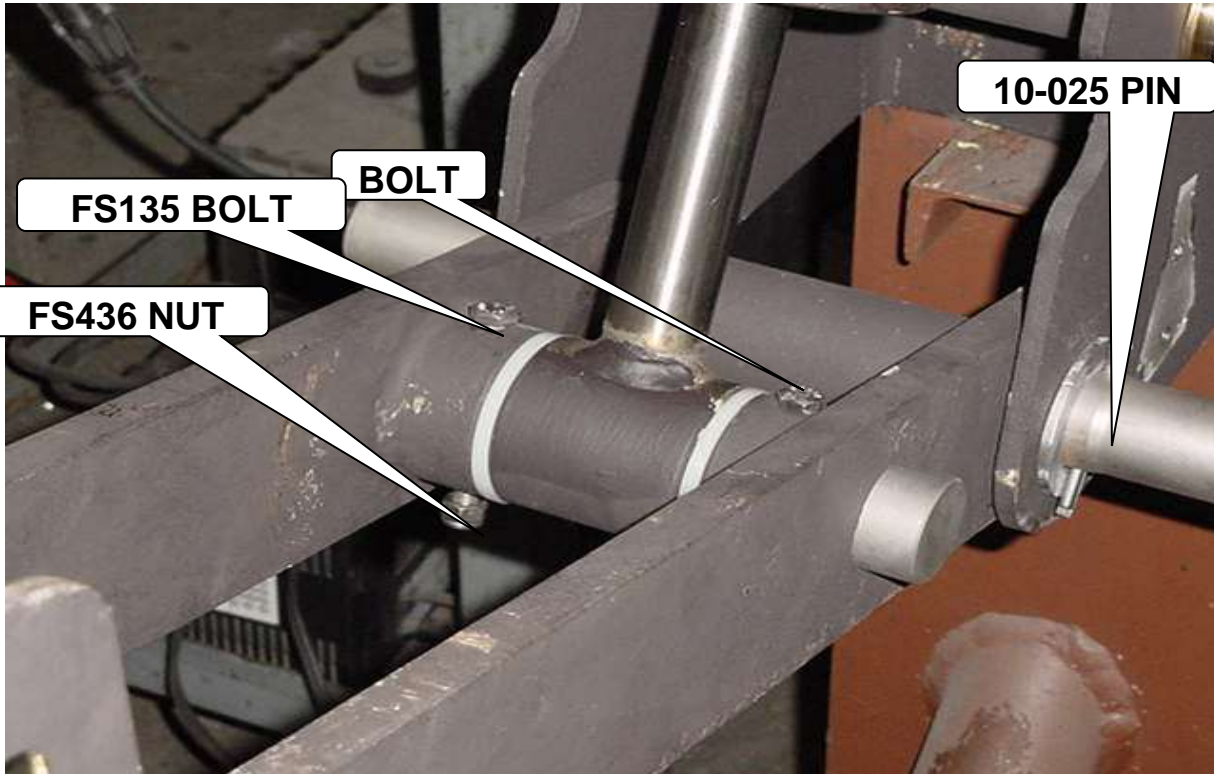
WITH SWIM PLATFORM REMOVED FROM THE BOAT

THIS CAN BE DONE WITHOUT REMOVING THE TRANSOM BRACKETS FROM THE TRANSOM
PUT THE LIFT ABOUT 1/2 WAY DOWN OR THE ARMS AT ABOUT 90 deg. FROM THE TRANSOM
THE PARTS ARE LISTED WITH OUR PART NUMBERS FOR EASE OF ORDERING

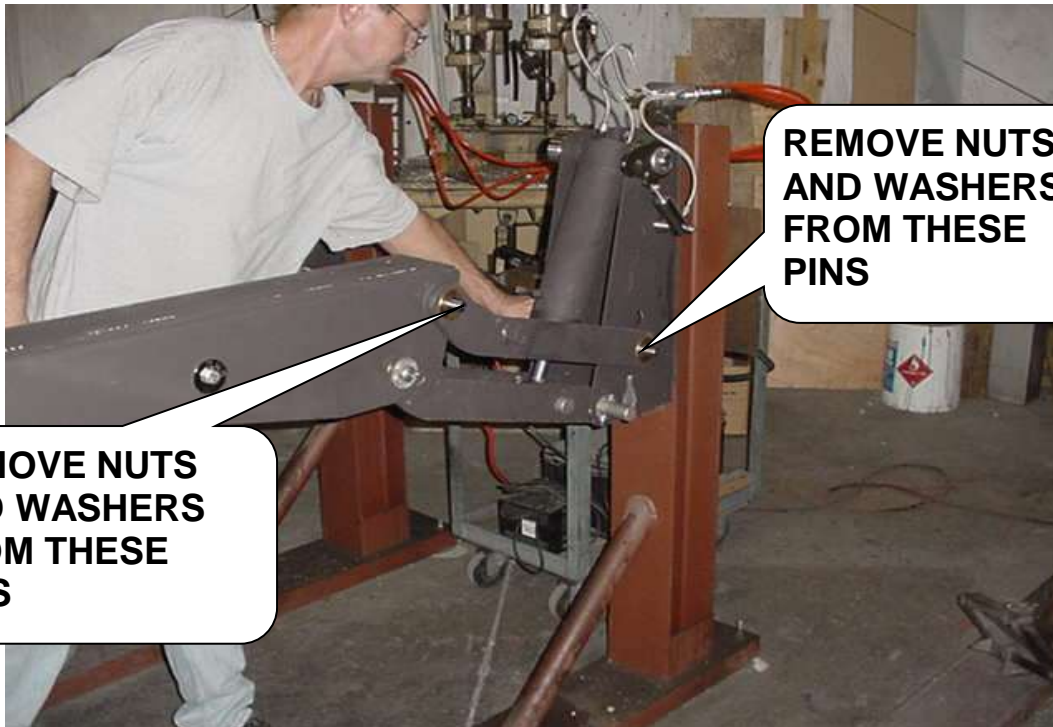


REMOVE THE 2 ea 1/4-20x2 1/2 INCH BOLTS AND NUTS

CLEAN THE PAINT OFF THE 10-025 CYLINDER TO POWER ARM PIN. DO NOT REMOVE THE PIN AT THIS TIME.



REMOVE THE 4ea FS442 3/4-10 NYLOCK NUTS AND THE FS334 3/4 INCH FLAT WASHERS FROM THE 10-010 PINS. THERE IS A NUT AND WASHER ON BOTH ENDS OF THIS PIN. DO NOT REMOVE PIN AT THIS TIME.



REMOVE NUTS AND WASHERS FROM THESE PINS

REMOVE NUTS AND WASHERS FROM THESE PINS

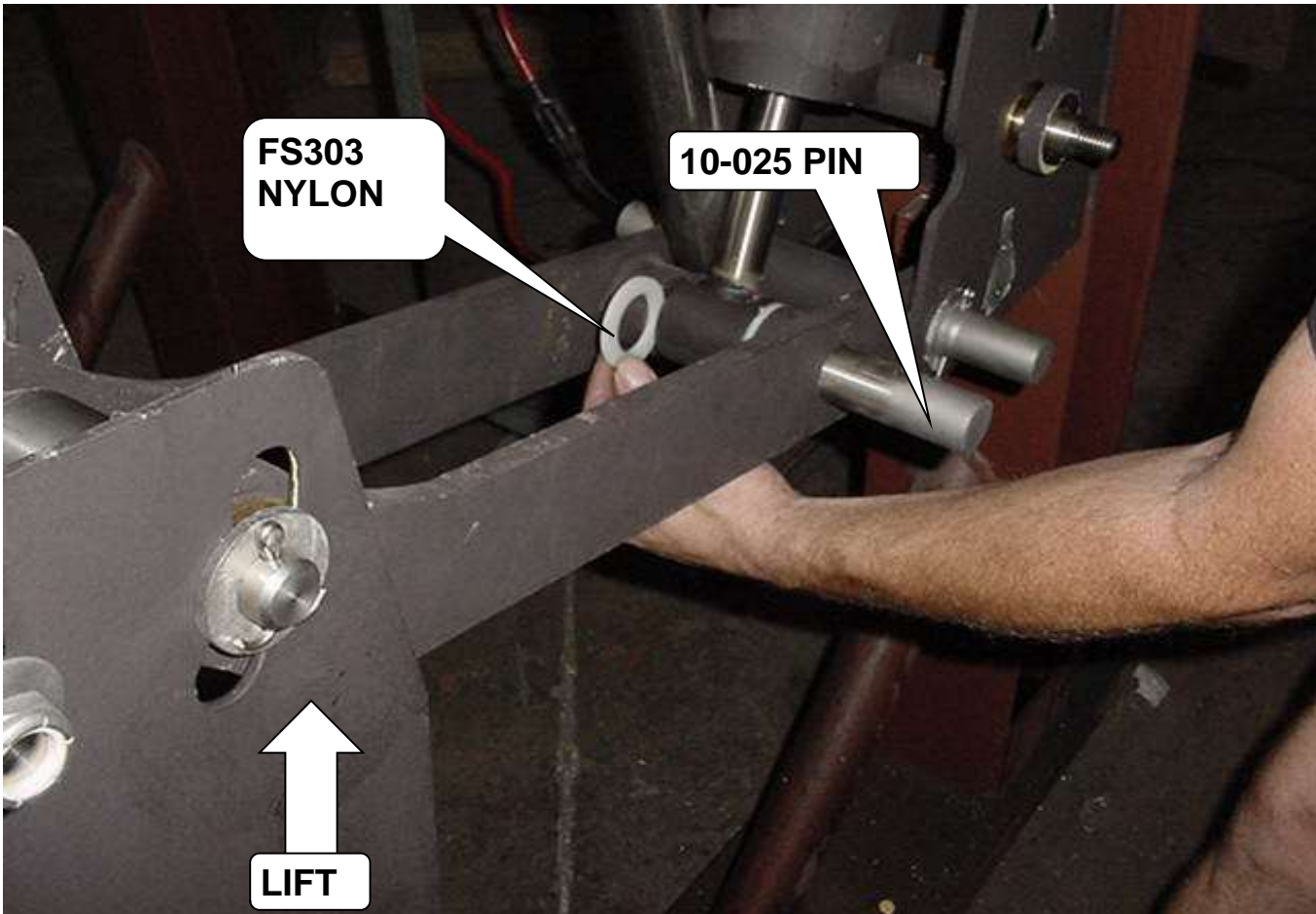
SUPPORT THE END OF THE PLATFORM BRACKET AND REMOVE THE UPPER ARMS



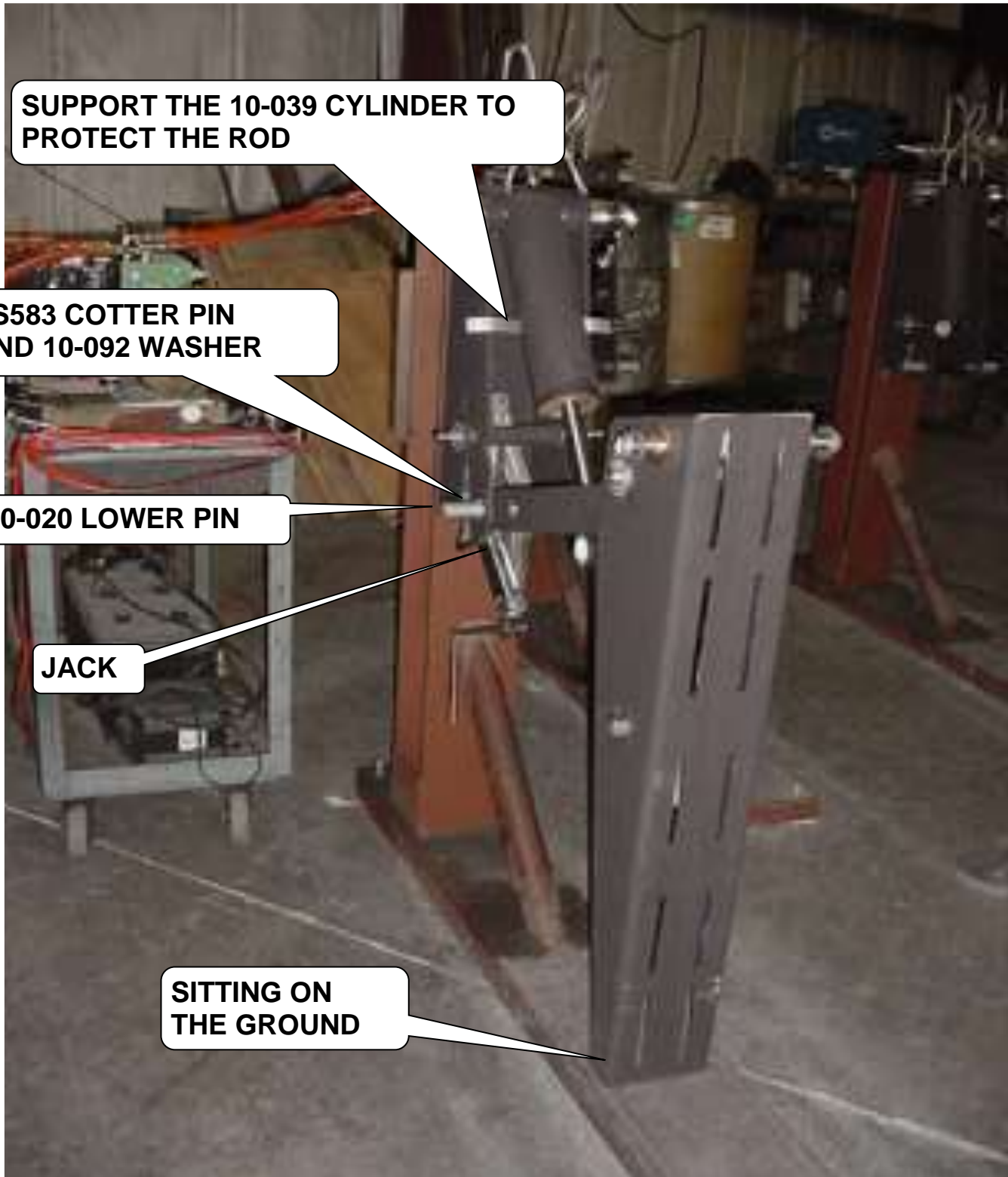
WITH BOTH UPPER ARMS REMOVED, ROTATE THE PLATFORM BRACKET DOWN.



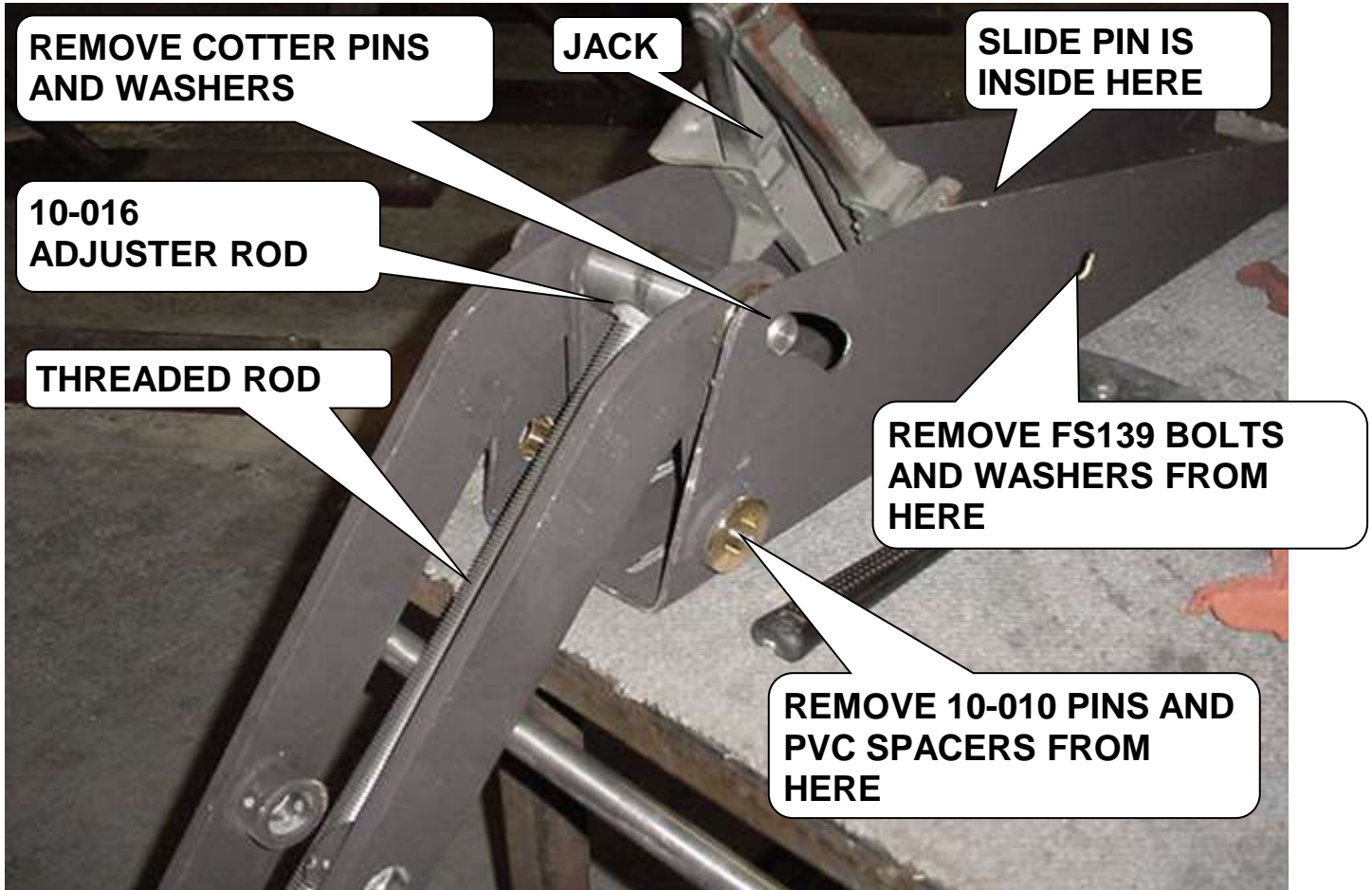
WITH A SLIGHT UPWARD LIFTING OF THE PLATFORM BRACKET, REMOVE THE 10-025 PIN AND THE 2ea FS303 NYLON
LET THE END OF THE PLATFORM BRACKET REST ON THE GROUND.



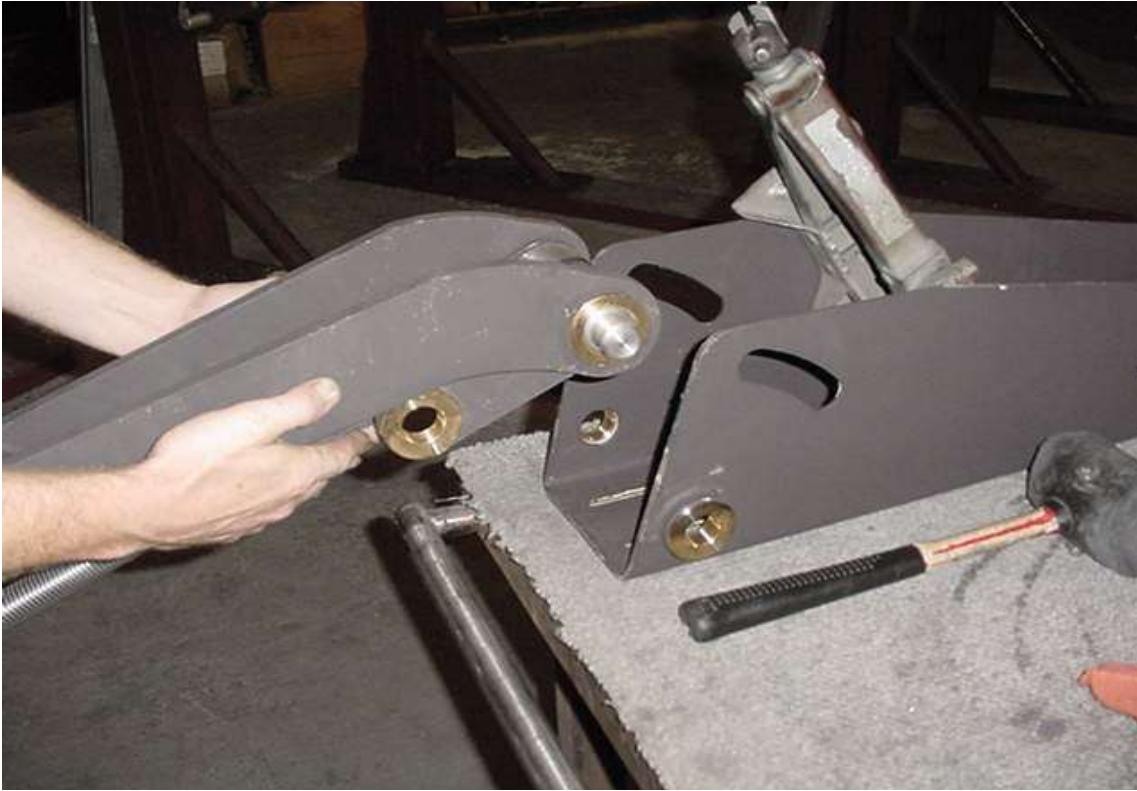
**SUPPORT THE 10-039 3" BRAVO CYLINDER TO PROTECT THE ROD WITH THE PLATFORM BRACKET RESTING ON THE GROUND, REMOVE THE FS583 COTTER PINS AND THE 10-092 FLAT WASHERS CLEAN THE PAINT OFF THE END OF THE 10-020 LOWER POWER ARM PIN AND SLIDE IT THREW CAREFULLY, THE LOWER POWER ARMS WILL SWING DOWN.
NOTE; YOU MAY HAVE TO JACK THE TRANSOM BRACKET OPEN SLIGHTLY TO REMOVE THE ARMS**



REMOVE THE FS583 COTTER PINS AND THE 10-094 WASHERS FROM THE 10-016 ADJUSTER ROD.
REMOVE THE FS443 1" NUT AND THE FS334 LOCK WASHER ON THE ADJUSTER ROD
REMOVE THE 2ea FS139 1/2-13x1" BOLTS FROM THE 10-011 SLIDE PIN
REMOVE THE 10-010 PIN AND PVC SPACERS FROM PLATFORM BRACKET
WITH A JACK, SPREAD THE PLATFORM BRACKET OPEN SLIGHTLY TO GET THE 10-011 SLIDE PIN OUT
ROTATE THE THREADED ROD BACK WITH THE POWER ARMS
WITH A JACK, SPREAD THE PLATFORM BRACKET OPEN SLIGHTLY TO GET THE ARM ASSEMBLY OUT



CAREFULLY ROTATE AND LIFT THE ARM ASSEMBLY OUT OF THE PLATFORM BRACKET



10-003 BRASS BUSHINGS ARE 1.25" ID AND 1.5" OD QTY 12 PER LIFT
10-021 BRASS BUSHINGS ARE 1" ID AND 1.5" OD QTY 20 PER LIFT

10-003 BRASS BUSHING

10-016 ADJUSTER

10-021 BRASS BUSHING

10-011 SLIDE PIN

POWER ARMS

LINK PLATES

**TO REASSEMBLE REVERSE ABOVE PROCEDURES
USE ANTI-SEIZE LUBRICANT ON ALL THREADED PARTS**

