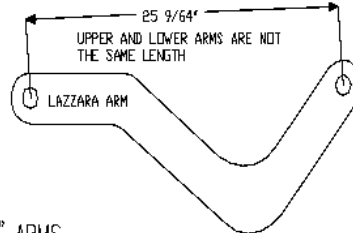
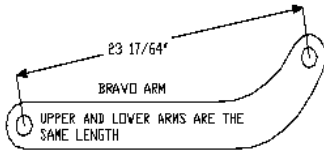
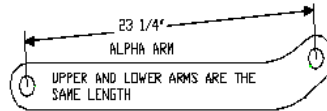
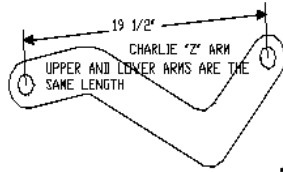
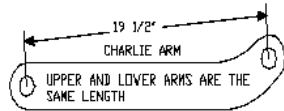
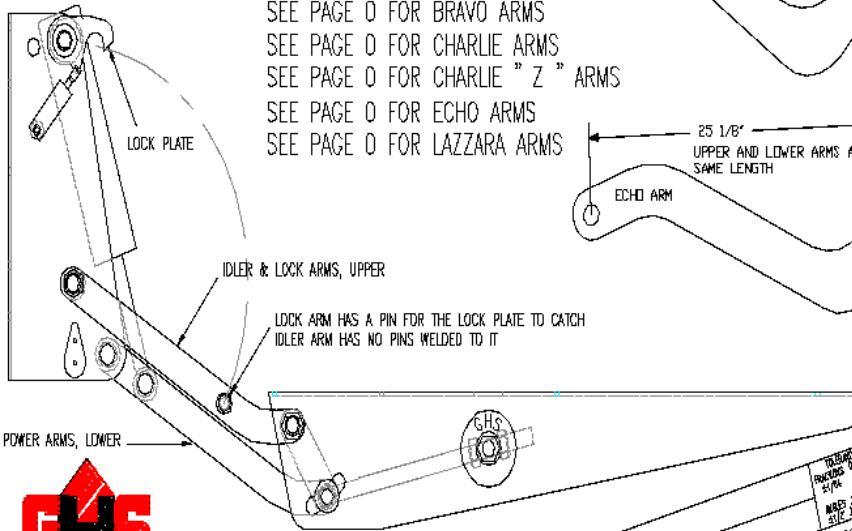
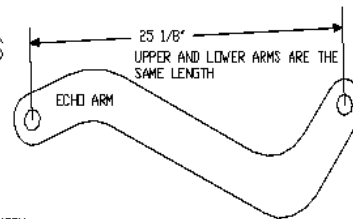


# ARM IDENTIFICATION



SEE PAGE 0 FOR ALPHA ARMS  
SEE PAGE 0 FOR BRAVO ARMS  
SEE PAGE 0 FOR CHARLIE ARMS  
SEE PAGE 0 FOR CHARLIE "Z" ARMS  
SEE PAGE 0 FOR ECHO ARMS  
SEE PAGE 0 FOR LAZZARA ARMS



PART IDENTIFIER

TRANSOM LIFT

DESIGNED BY FRANK

DATE 08-10-2005

TO BE USED FOR  
PARTS LIST  
SCALE X  
PLOT SCALE FIT A 10MM INCHES

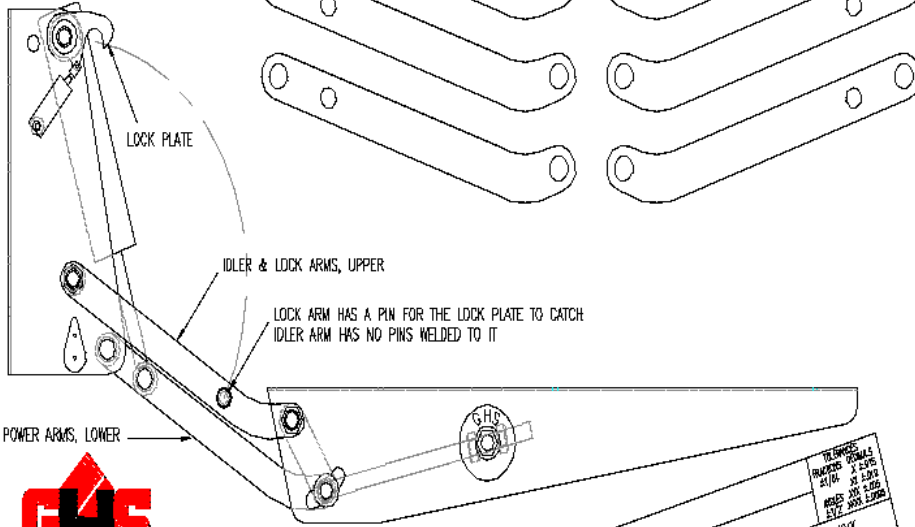
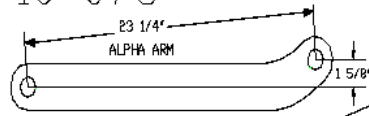
# ALPHA ARM IDENTIFICATION

## GHS10-071, 10-072, 10-073

GHS10-072 ARM UPPER WITH LOCK PIN  
PORT & STARBOARD SIDES

GHS10-071 ARM UPPER, IDLER  
PORT & STARBOARD SIDES

GHS10-073 ARM LOWER, POWER  
PORT & STARBOARD SIDES



PART IDENTIFIER  
TRANSOM LIFT  
DRAWN BY: [blank]  
DATE: [blank]  
SCALE: X  
PLAY SCALE FIT A UNITS-INCHES

REVISIONS  
NO. DATE BY  
1 10/04 [blank]  
2 01/05 [blank]  
3 03/05 [blank]

DRAWN BY: GHS-XX-XXX  
DATE: DDMMYY

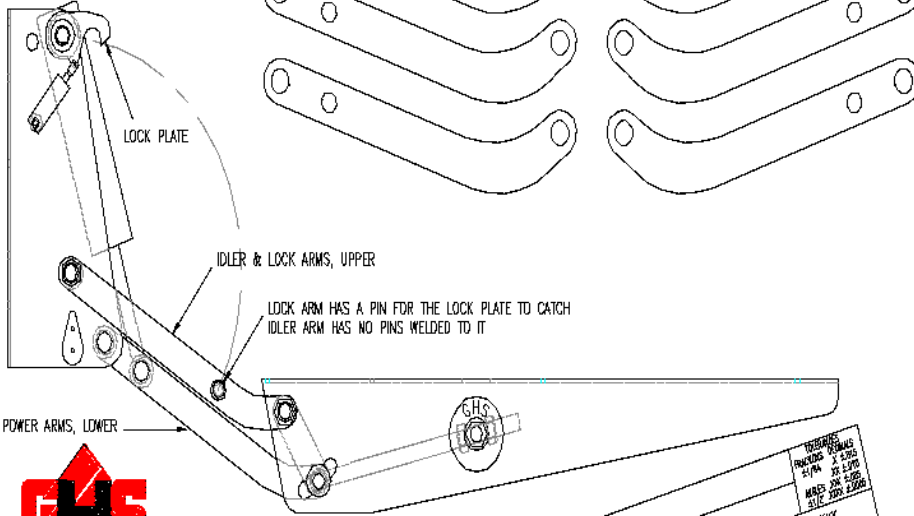
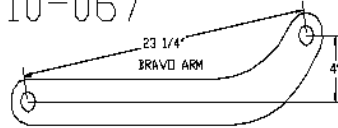
# BRAVO ARM IDENTIFICATION

## GHS10-065, 10-066, 10-067

GHS10-066 ARM UPPER WITH LOCK PIN  
PORT & STARBOARD SIDES

GHS10-065 ARM UPPER, IDLER  
PORT & STARBOARD SIDES

GHS10-067 ARM LOWER, POWER  
PORT & STARBOARD SIDES



PART IDENTIFIER  
TRANSOM LIFT  
DRAWN BY PAW  
DATE 08-10-00

DATE: GHS-XX-XXXX  
SCALE: X  
PLOT SCALE: FIT A UNITS-INCHES

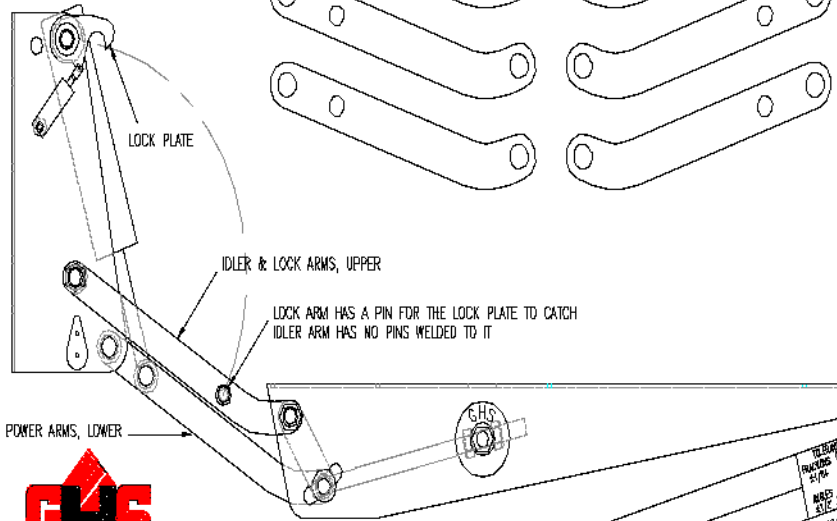
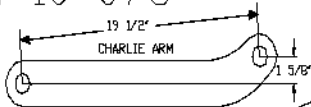
# CHARLIE ARM IDENTIFICATION

## GHS10-076, 10-077, 10-078

GHS10-076 ARM UPPER WITH LOCK PIN  
PORT & STARBOARD SIDES

GHS10-077 ARM UPPER, IDLER  
PORT & STARBOARD SIDES

GHS10-078 ARM LOWER, POWER  
PORT & STARBOARD SIDES



PART IDENTIFIER  
TRANSOM LIFT  
DRAWN BY: PBAW  
DATE: 04/10/07  
SCALE: X  
PLT SCALE: FIT A UNITS-(INCHES)

TO BE USED AS  
PARTS LIST  
FOR  
MODELS  
GHS-XX-XXX  
DATE: 04/10/07  
SCALE: X  
PLT SCALE: FIT A UNITS-(INCHES)

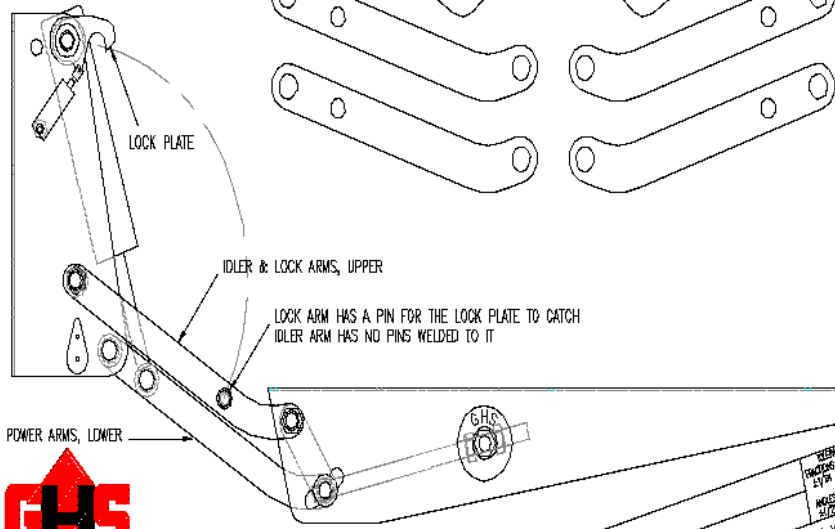
# CHARLIE - Z ARM IDENTIFICATION

## GHS10-149, 10-153, 10-078

GHS10-149 ARM UPPER WITH LOCK PIN  
PORT & STARBOARD SIDES

GHS10-153 ARM UPPER, IDLER  
PORT & STARBOARD SIDES

GHS10-078 ARM LOWER, POWER  
PORT & STARBOARD SIDES



PART IDENTIFIER  
TRANSOM LIFT  
DIM BY PAM  
& MET-SCALE DIMEN  
DATE COMMANY  
SCALE X  
PLOT SCALE FIT A UNITS-INCHES



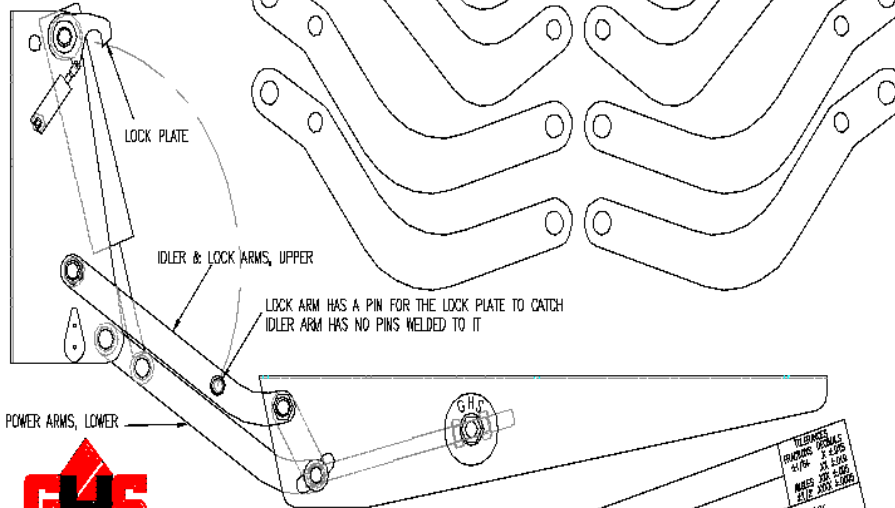
# ECHO ARM IDENTIFICATION

## GHS10-221-UAL, 10-221-UA, 10-221-LA

GHS10-221-UAL ARM UPPER WITH LOCK PIN  
PORT & STARBOARD SIDES

GHS10-221-UA ARM UPPER, IDLER  
PORT & STARBOARD SIDES

GHS10-221-LA ARM LOWER, POWER  
PORT & STARBOARD SIDES



PART IDENTIFIER  
TRANSOM LIFT  
DRAWN BY: PAW  
DATE: 08-2016  
SCALE: X  
UNIT: INCHES

TECHNICAL  
DRAWING  
DATE: 08-2016  
SCALE: X  
UNIT: INCHES

GENERAL HYDRAULIC SOLUTIONS Inc. • MAT. X

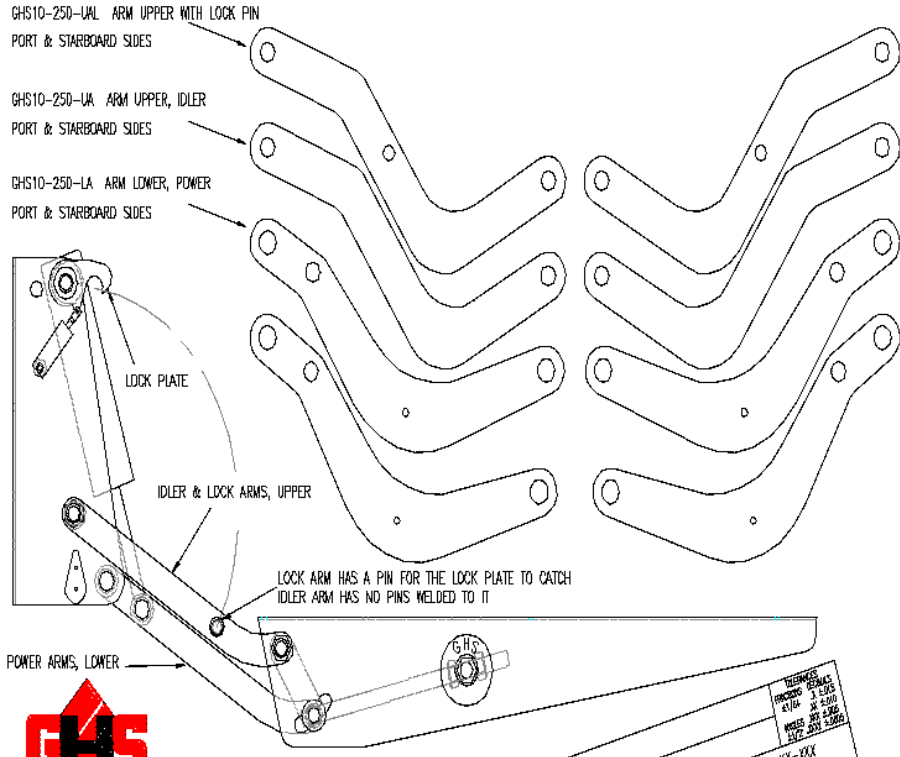
NOTE:

PART TO SUB-ASSEMBLY (IF APPLICABLE)

SHEET OF

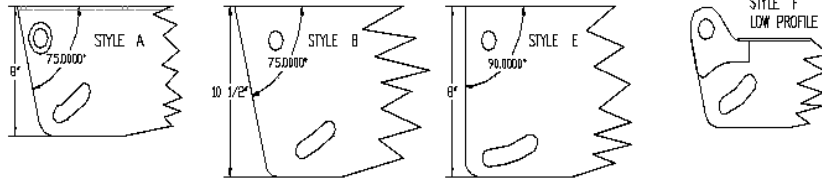
# LAZZARA92 ARM IDENTIFICATION

## GHS10-250-UAL, 10-250-UA, 10-250-LA

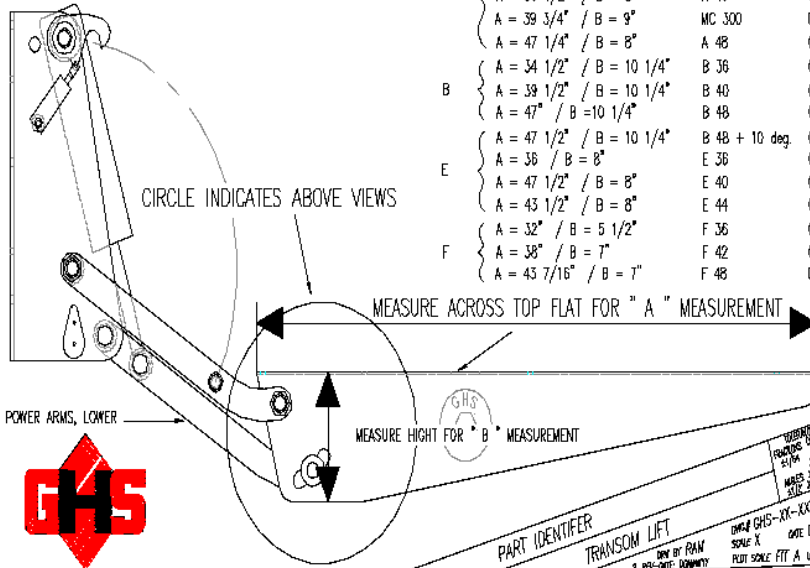


PART IDENTIFIER  
TRANSOM LIFT  
DRAWN BY: FRANK  
7.10.12-REV: 0000000000  
DATE: 07/10/12  
SCALE: X  
FOR SCALE FIT A UNITS=INCHES

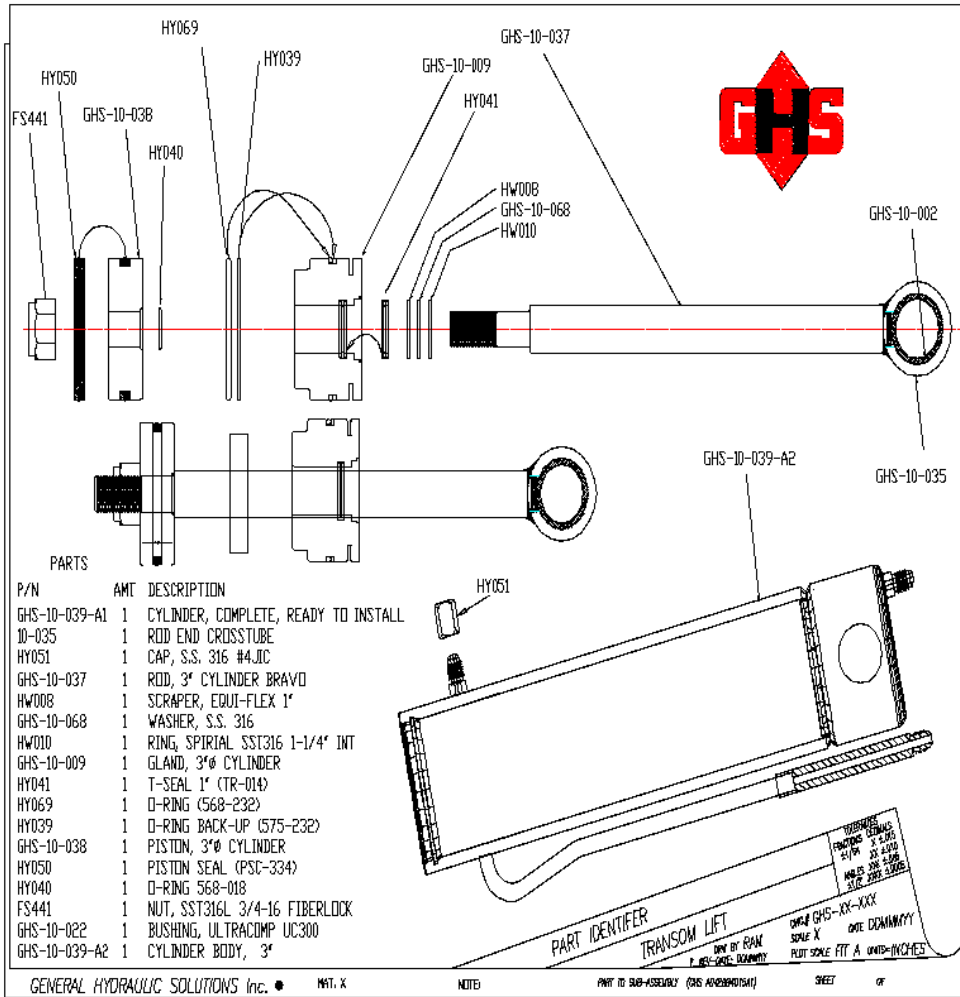
# PLATFORM BRACKET IDENTIFICATION



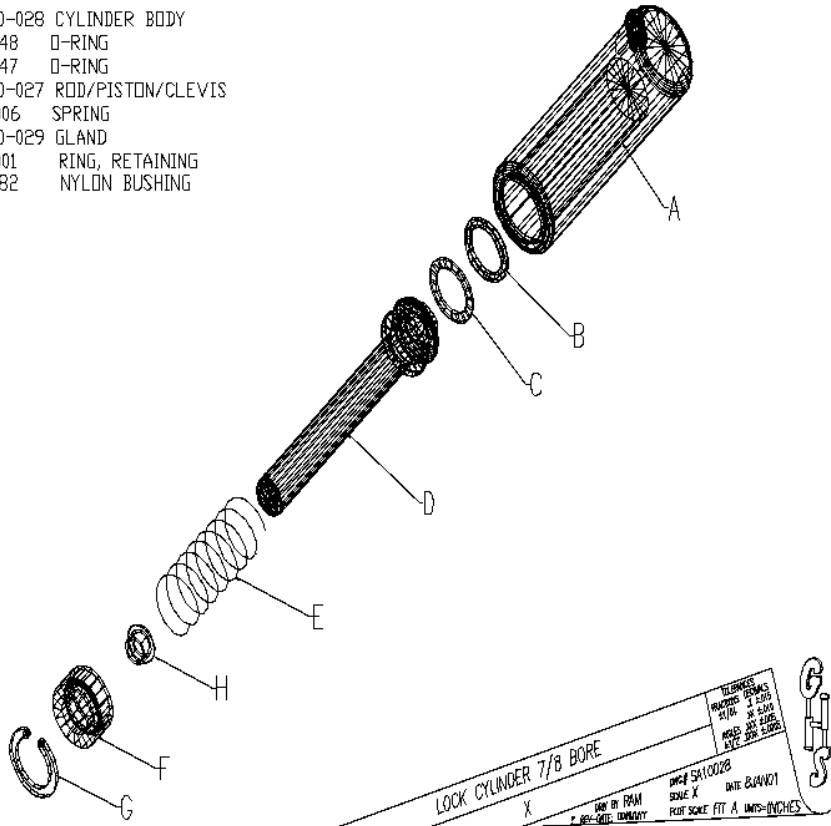
STYLE	MEASUREMENTS	MODEL	PART NUMBER
A	A = 35 1/2" / B = 8"	A 36	GHS10-114
	A = 38 3/4" / B = 8"	A 36,75	GHS10-263
	A = 39 1/2" / B = 8"	A 40	GHS10-117
	A = 39 3/4" / B = 8"	MC 300	GHS10-279
	A = 47 1/4" / B = 8"	A 48	GHS10-059
B	A = 34 1/2" / B = 10 1/4"	B 36	GHS10-235
	A = 39 1/2" / B = 10 1/4"	B 40	GHS10-058
	A = 47" / B = 10 1/4"	B 48	GHS10-080
E	A = 47 1/2" / B = 10 1/4"	B 48 + 10 deg.	GHS10-254
	A = 36" / B = 8"	E 36	GHS10-246
	A = 47 1/2" / B = 8"	E 40	GHS10-147
F	A = 43 1/2" / B = 8"	E 44	GHS10-158
	A = 32" / B = 5 1/2"	F 36	GHS10-102
	A = 38" / B = 7"	F 42	GHS10-225
	A = 43 7/16" / B = 7"	F 48	GHS10-133



PART IDENTIFIER  
 TRANSOM LIFT  
 DRAWN BY: RAY  
 DATE: 02/01/00  
 SCALE: X  
 UNIT: INCHES



- A CP10-028 CYLINDER BODY
- B HY048 O-RING
- C HY047 O-RING
- D MP10-027 ROD/PISTON/CLEVIS
- E HW006 SPRING
- F MP10-029 GLAND
- G HW001 RING, RETAINING
- H FSD82 NYLON BUSHING



GENERAL HYDRAULIC SOLUTIONS Inc. • NAT. X

NOTE:

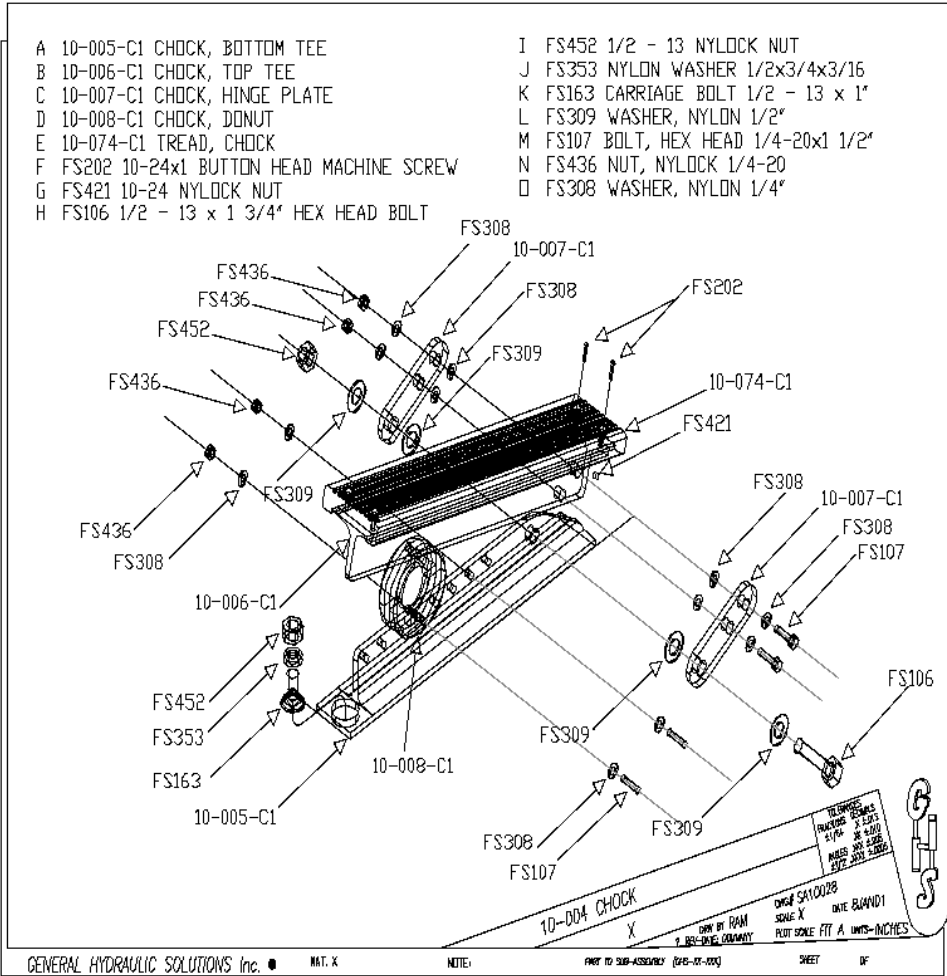
PART TO SUB-ASSEMBLY (948-02-400)

SHEET 07

LOCK CYLINDER 7/8 BORE  
X

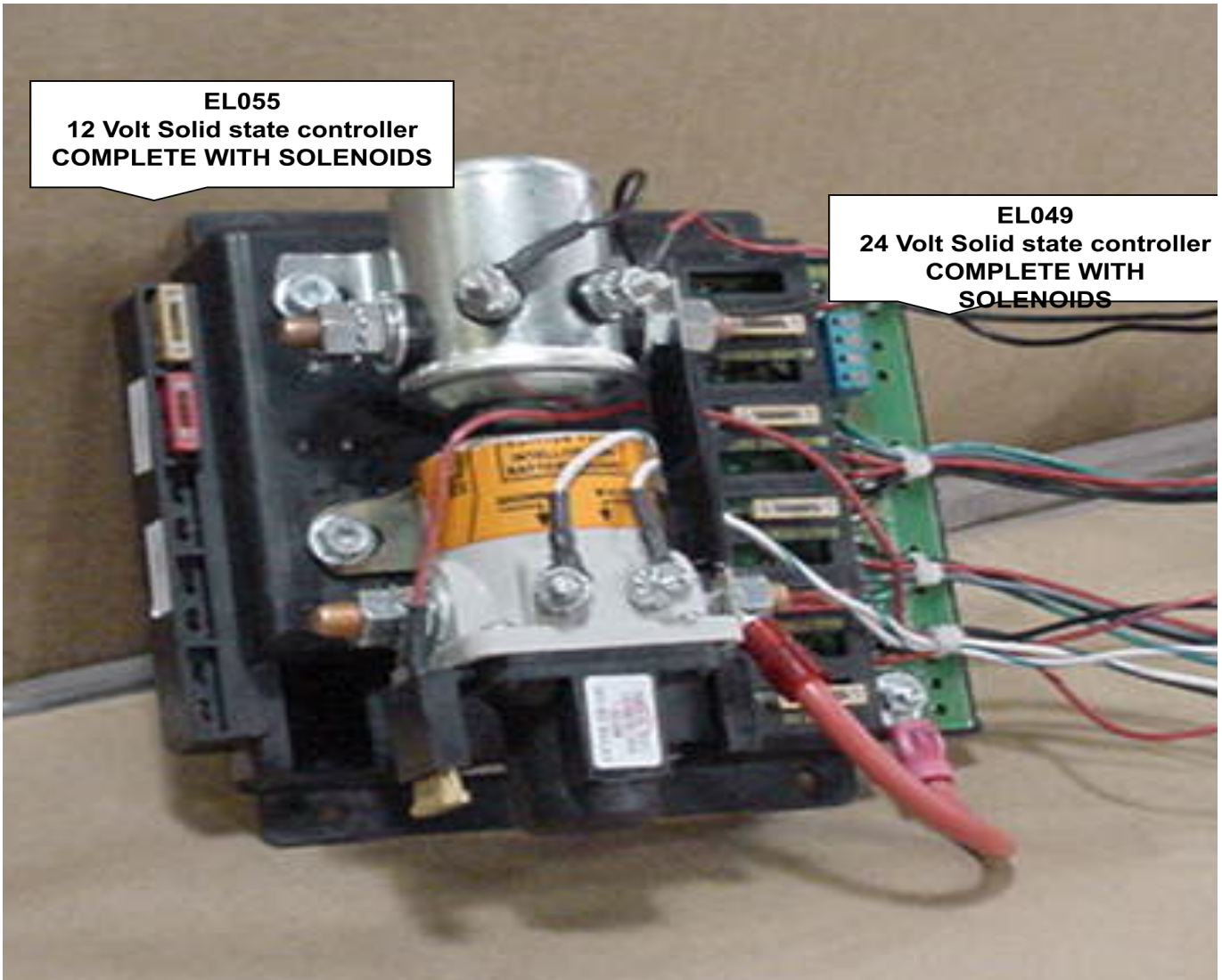
TELEPHONE: 813-941-1111  
FAX: 813-941-1112  
EMAIL: SALES@GHS.COM  
WWW.GHS.COM

DATE: 02/01/01  
SCALE: X  
FIRST SCALE: FIT. A UNITS-INCHES

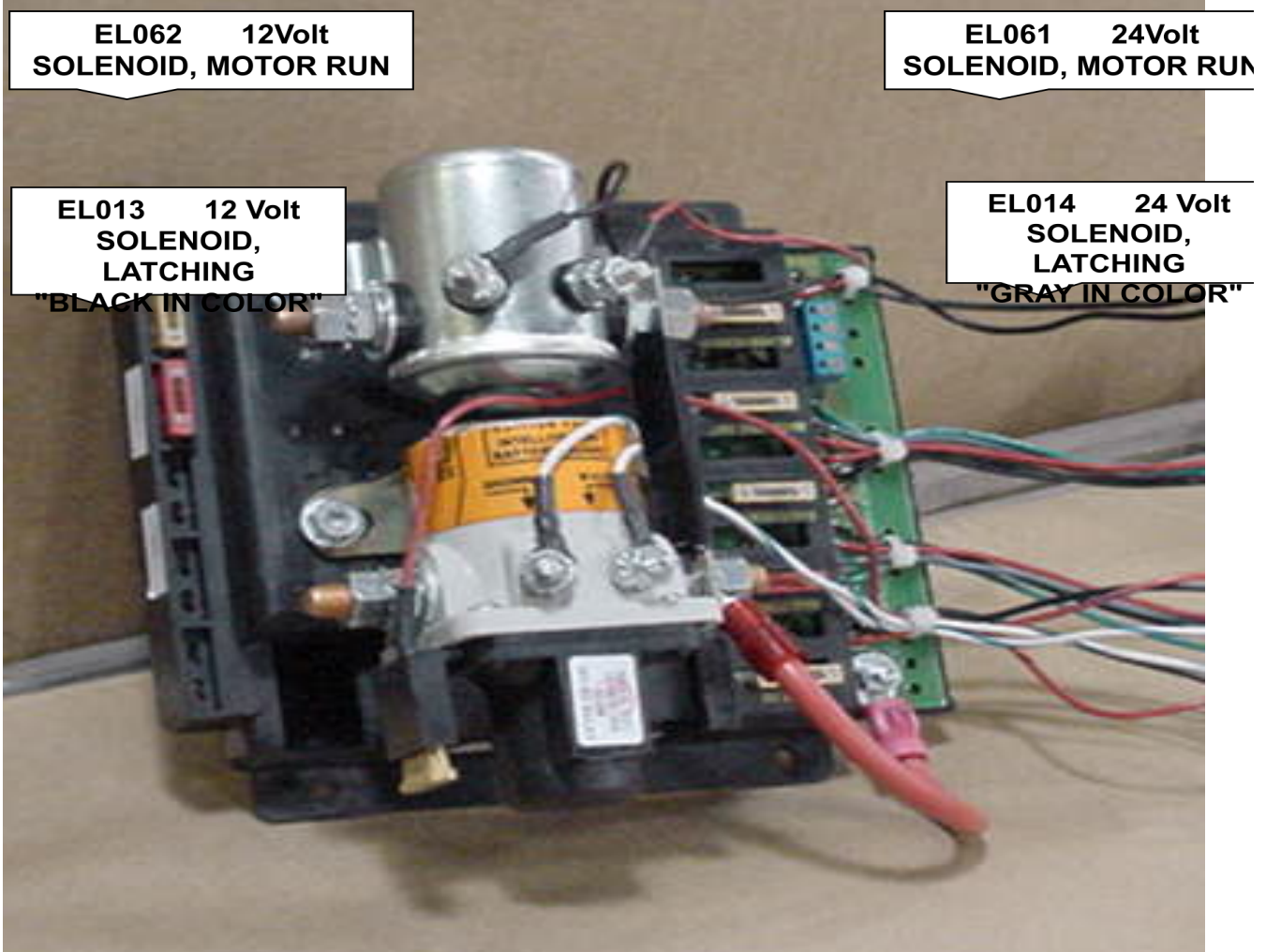


**EL055**  
**12 Volt Solid state controller**  
**COMPLETE WITH SOLENOIDS**

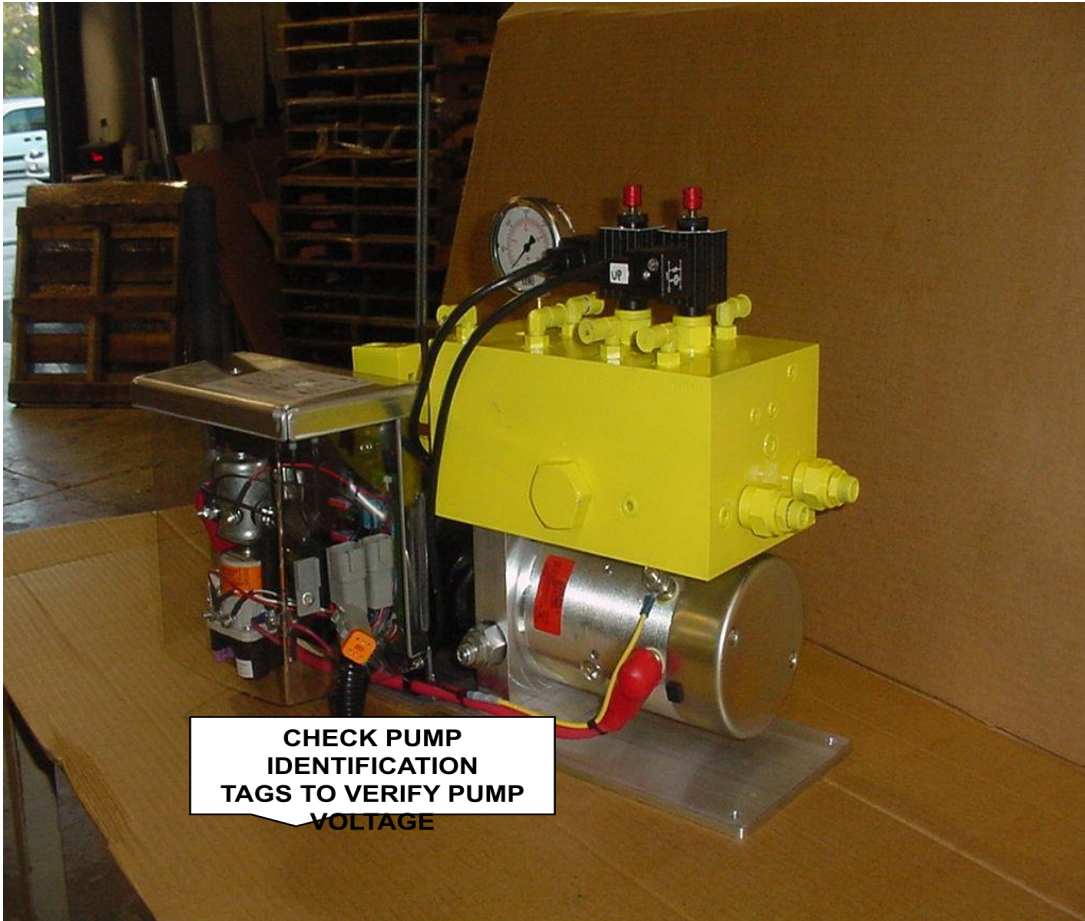
**EL049**  
**24 Volt Solid state controller**  
**COMPLETE WITH SOLENOIDS**

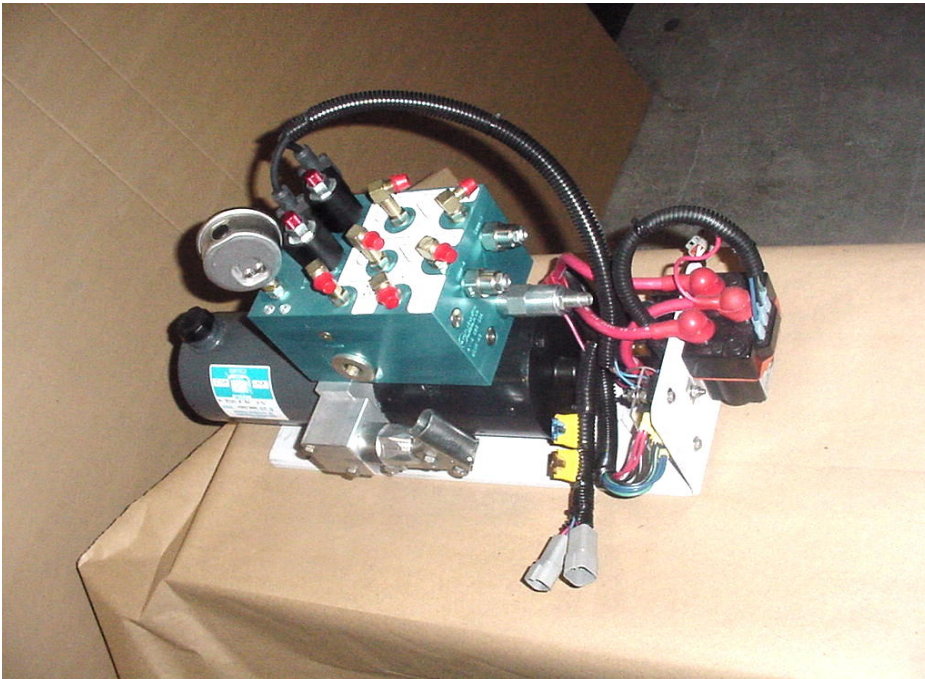


THE SOLID STATE CONTROLLER SHOWN IN THESE PICTURES IS A 24 VOI  
USED FOR DEMONSTRATION PURPOSE ONLY  
VERIFY PUMP VOLTAGE BEFOR ORDERING PARTS









**CHECK PUMP  
IDENTIFICATION  
TAGS TO VERIFY PUMP  
VOLTAGE**